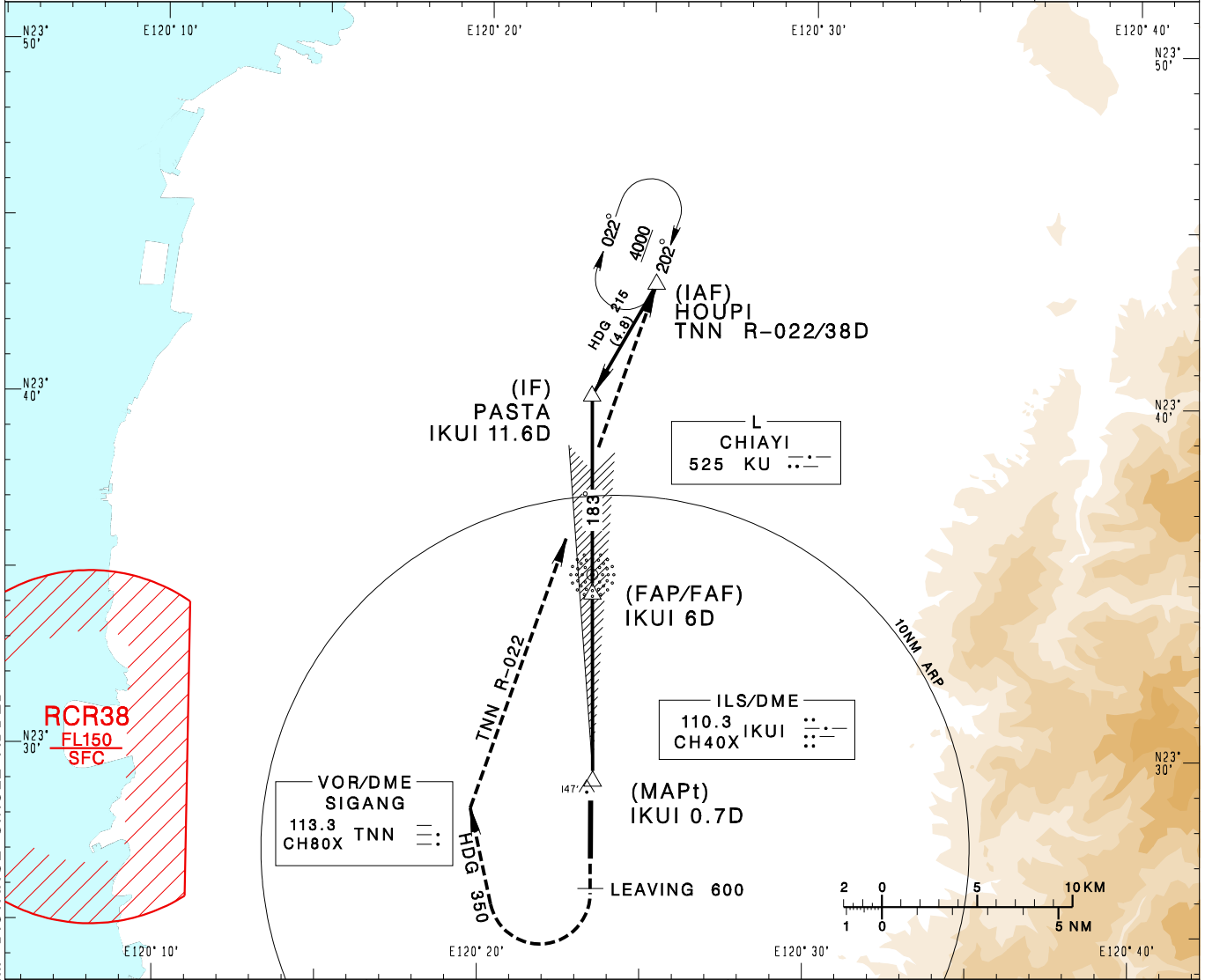


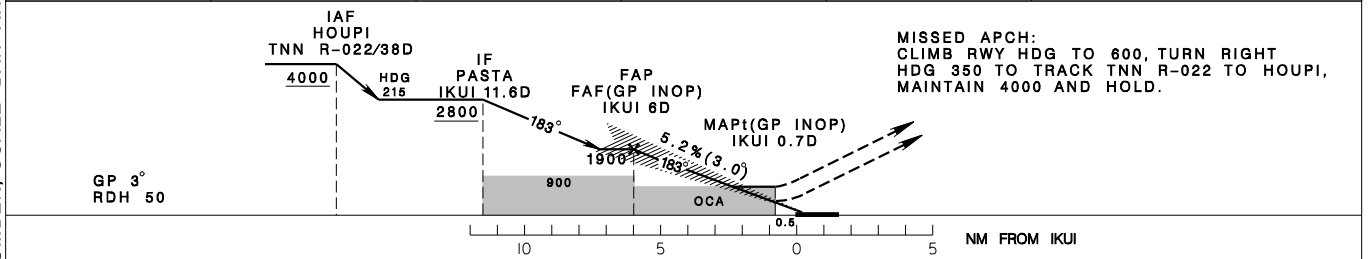
嘉義機場
CHIAYI AD

RCKU
ILS or LOC RWY18

KAOHSIUNG APP 120.6 301.0	CHIAYI TWR 118.6 236.6 275.8	VAR 3° W	
Apt Elev: 85'	Rwy18 THR Elev: 75'		
BEARINGS ARE MAGNETIC; DISTANCES ARE NAUTICAL MILES; ELEVATIONS, HEIGHTS IN FEET			



6DME	5DME	4DME	3DME	2DME	DIST to IKUI
1990	1670	1350	1040	720	ADVISORY ALT



MINIMA (OCA IN FT, VIS IN M, OCH IN FT)				
CATEGORY	A	B	C	D
ILS	275/1200 RVR1200 200	275/1200 RVR1200 200	275/1200 RVR1200 200	275/1200 RVR1200 200
LOC (GP INOP)	500/1600 425	500/1600 425	500/2000 425	500/2000 425
CIRCLING	600/1900 515	620/2800 535	720/3700 635	780/4600 695

NOTE:
 1. CIRCLING NOT AUTHORIZED EAST OF RUNWAY.
 2. TRAFFIC FROM SOUTH JOIN HOUPI HOLDING PATTERN FOR COURSE REVERSAL.
 3. CAUTION OBSTACLES (TREES) UP TO 147FT PENETRATE THE VISUAL SEGMENT SURFACE (VSS).
 *DME REQUIRED.

CHANGES: NEW PAGE NUMBER, SCALE BAR AND 10NM DISTANCE CIRCLE ADDED